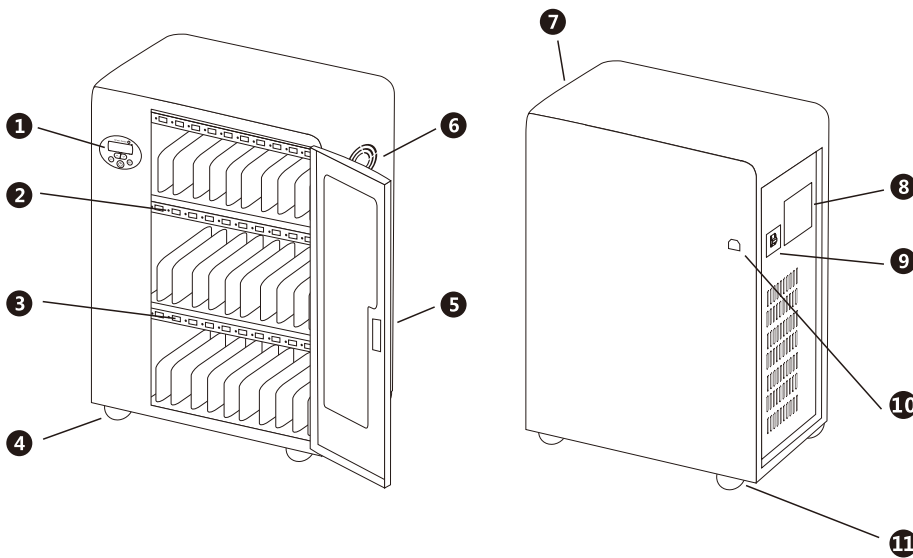


Charging Cart Manual



1. Power Switch / Timer control / UV
2. LED Indicator
3. USB Charging Interface
4. Stand Wheel with lock
5. Cabinet Locker
6. Cooling fan
7. Handles (optional)
8. Cooling fan
9. Leakage Protective Switch
10. Power Interface
11. Stand Wheel

Package Contents

- AC Power Cable
- Handles (optional)
- 2 Front Door Keys
- 1 Side Door Key
- Instruction Booklet

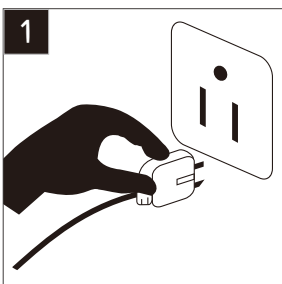
Tips : Before start using this product, please read the instructions carefully. Please strictly follow the instructions for installation, application and maintenance. We will not be responsible for any damage caused by the wrong operation.



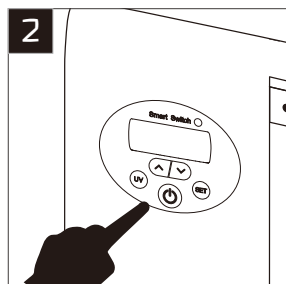
Product Specs

Model	QP-R10TB	QP-R20TB	QP-R30TB	QP-R40TB	QP-R52TB	QP-R60TB	QP-R65TB
Charging Numbers	10	20	30	40	52	60	65
Input Voltage	110/220V/50Hz	110/220V/50Hz	110/220V/50Hz	110/220V/50Hz	110/220V/50Hz	110/220V/50Hz	110/220V/50Hz
Outage Voltage	5V2.4A * 10USB	5V2.4A * 20USB	5V2.4A * 30USB	5V2.4A * 40USB	5V2.4A * 52USB	5V2.4A * 60USB	5V2.4A * 65USB
Pated Power	200W	300W	400W	600W	600W	800W	800W
Product Size	540*390*330mm	556*400*665mm	556*400*920mm	556*400*1190mm	650*400*1190mm	650*400*1455mm	650*400*1455mm
Packape Size	610*470*410mm	630*470*740mm	630*470*990mm	630*470*1245mm	720*470*1245mm	720*470*1510mm	720*470*1510mm
Net Weight	15 kg	31 kg	44 kg	52 kg	60 kg	73 kg	74 kg
Gross Weight	19 kg	37 kg	53 kg	61 kg	70 kg	85 kg	86 kg

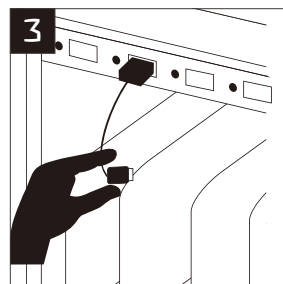
Using the Charging Cart



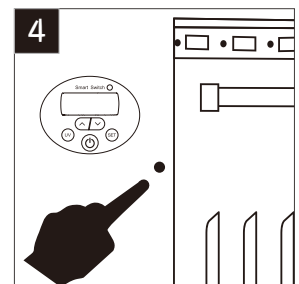
1 Plug in the power cord of the charging cabinet ;



2 Turn on the green power master switch and the purple UV disinfection function switch. (Please refer to the following setting details for specific operation)



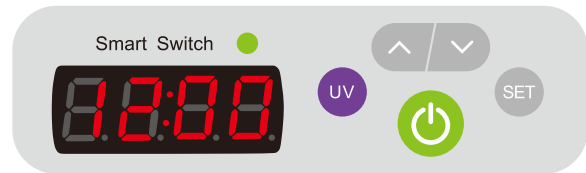
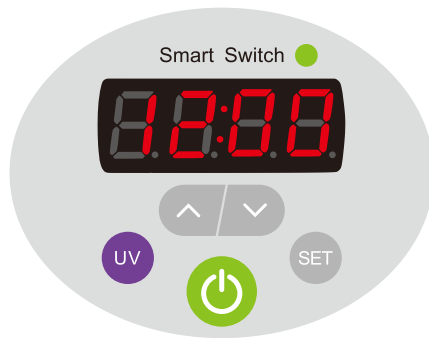
3 Connect the device with the USB charging cable.



4 When opening the door, the door control switch will stop the power of the UV disinfection lamp.

Smart Digital Control Panel

New control panel smart switch operation instruction



Charging setting:

Please press power button, it will start to work.

UV-C disinfection setting:

Please press power button, it will start to charge. It supports UV and charging to work same time. UV-C will auto turn off after 5 min, charge will keep work, according to charging timer setting.

Charging time setting:

Please press SET button, it will display C01, C02... C24. Number means it will charge hours. For example, C01 means it will charge 1 hour, C02 means it will charge 2 hours... C24 means it will charge 24 hours. If you set 1 hour, they will charge with in 1 hour, it will stop charging over 1 hour.

Local time setting:

Please press SET twice, when number is shining, you can press UP or DOWN buttons to adjust, if set it well please press set once time.

Lock/unlock keys setting:

Please press UP button long time like 3-4 seconds, and can listen a "Di". Unlock is the same.

Temperature controlled cooling fan:

When cabinet has 45°C, it will auto turn on.

Safety promise

The following products strictly obey the law on national electrical product regulations and we promise to assume corresponding responsibility .

Safety precautions Before Use and Maintenance

Please check and confirm the following conditions before operation

- Power outlet must connect with the ground to avoid electric leakage.
- The cabinet must be located in a suitable storage . The wheels must be locked to avoid any movement .
- In order to prolong life cycle , avoid rain and direct sunlight . Do not store the Cabinet next to Window .
- Before moving , release the lock on the wheels .
- Avoid pouring the water or alcohol directly onto the cabinet when cleaning . Liquid damage internal circuits .
- For long term storage , remember to unplug the power cable and put a dust Cover over the Cabinet .
- Only qualified personnels are permitted to service the cabinet . Always unplug power cable before proceeding .



Must ground lead



Avoid slope



Avoid high temperature



Avoid moisture